

INFORMATION

2012-02-24

Transportation between Airport and New Century Hotel

The Beijing Capital International Airport is commonly used for international flights. Taxi is the easiest way to get the New Century Hotel. The taxi fee is about CNY 120 from International Airport.

How To Ask the Way to the New Century Hotel

The information below with the Chinese translation will help you communicate with taxi drivers or local people to find your way.

“I want to go to the New Century Hotel”

“我要去北京新世纪饭店”

”

地址（address）：北京市海淀区首都体育馆南路 6 号

No.6 Southeren Road Capital Gym, Haidian District, Beijing

北京新世纪日航饭店

hotel nikko new century beijing

电话（Tel）： 86-10-6849 1827

<http://www.newcenturyhotel.com.cn>

The NSMC/CMA is planning a schedule of transportation the first day at 08:30 am on 5 March 2012 from New Century Hotel to NSMC\CMA. It will be forwarded to delegates in due course. The Staff from NSMC will pick you up in the hotel lobby with a paper writing “GISIS MEETING”.

Social Activities

An ice-breaker and a welcome reception will be arranged at 19:00 pm on Monday 5 March 2012. Departure time is 18:30.

On Wednesday 7 March 2012 a technical visit to Beijing Ground Receiving Station will be arranged. Departure time is 15:45.

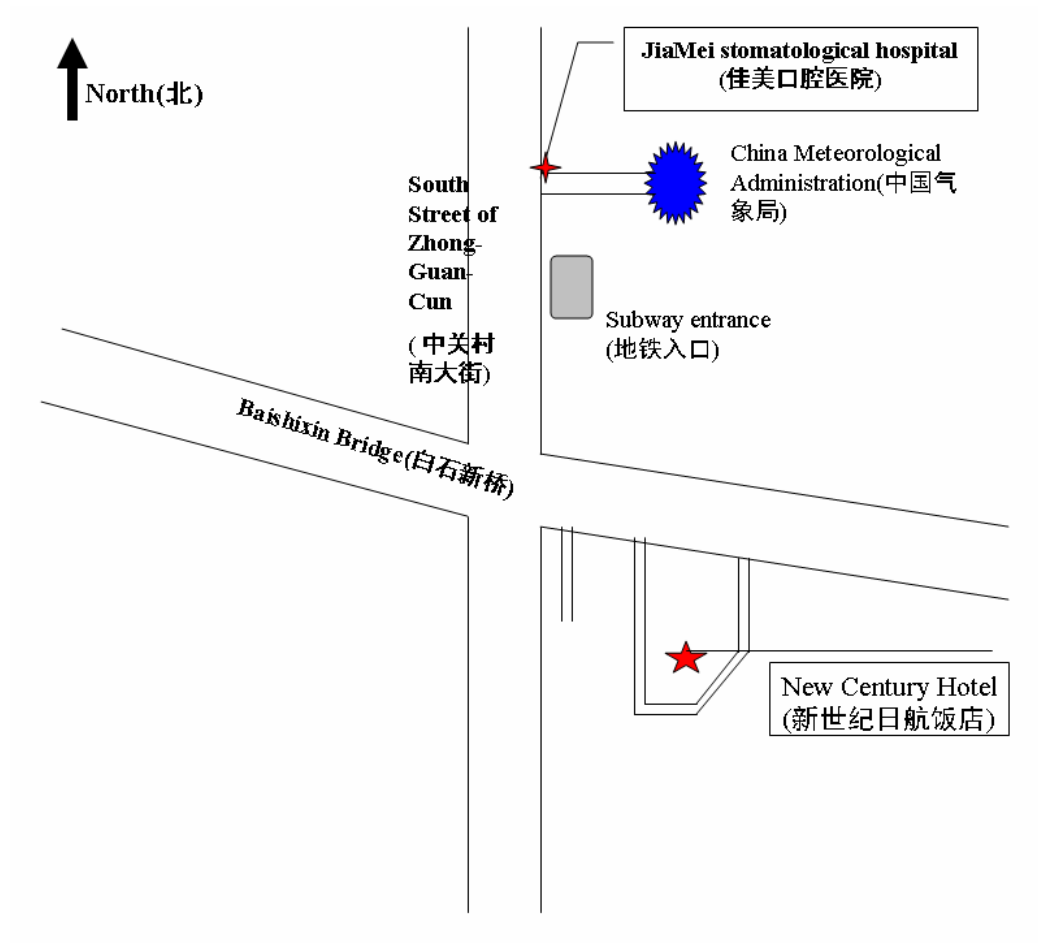
Lunch Information

Lunch will be provided freely by NSMC.

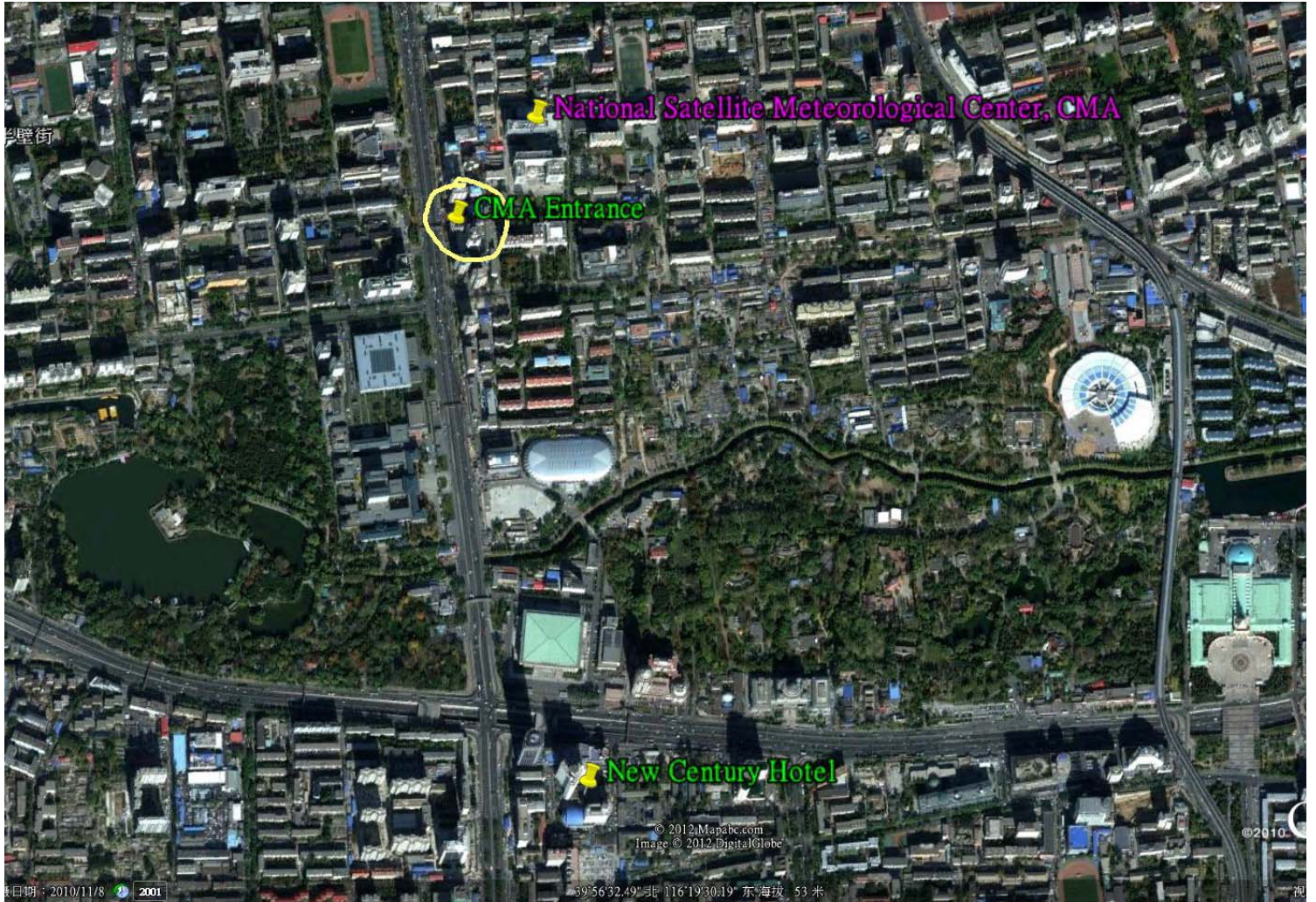
Maps between NSMC/CMA and New Century Hotel

At gate of CMA, go straight and turn left at the first **crossroad**. The NSMC is at the end of this road.

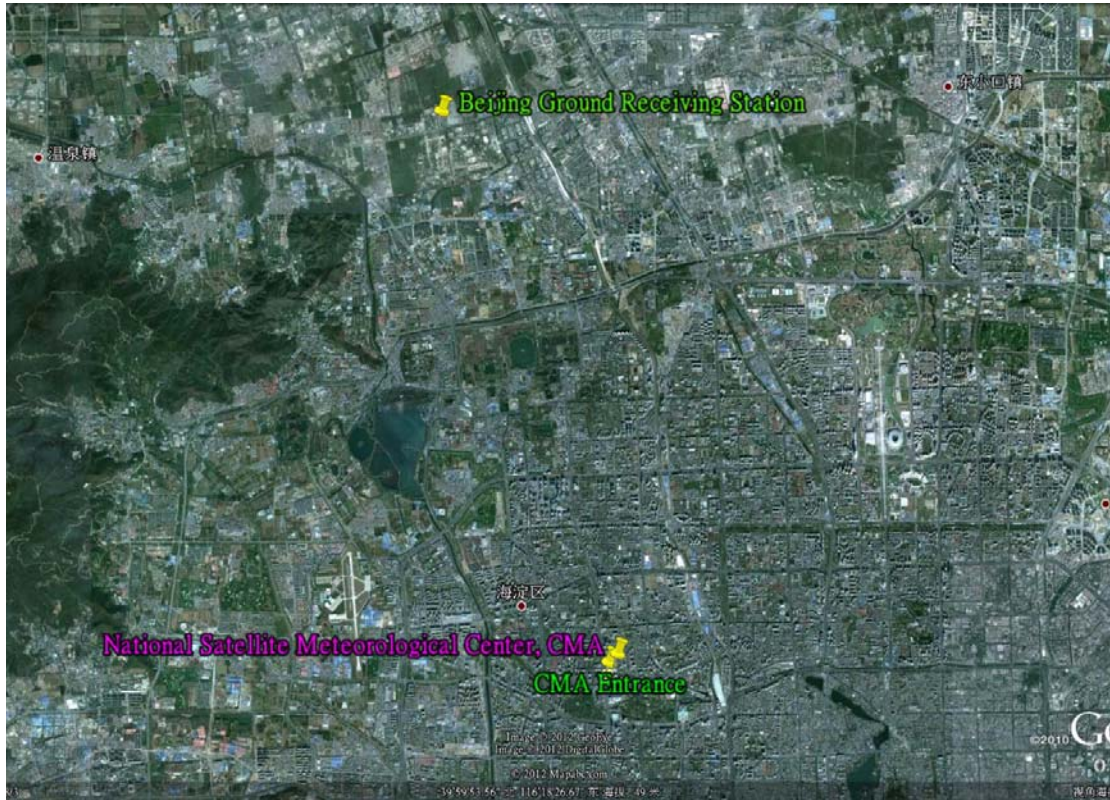
Sketch Map



Google Map



About 1 km.



About 15 km.