



**Welcome to the GSICS Annual Meeting,  
17-21 March 2025, at Holiday Inn Changchun Jingyue Hotel,  
Changchun, China**



*Jointly Hosted by NSMC(NCSW) and CIOMP*

## VENUE

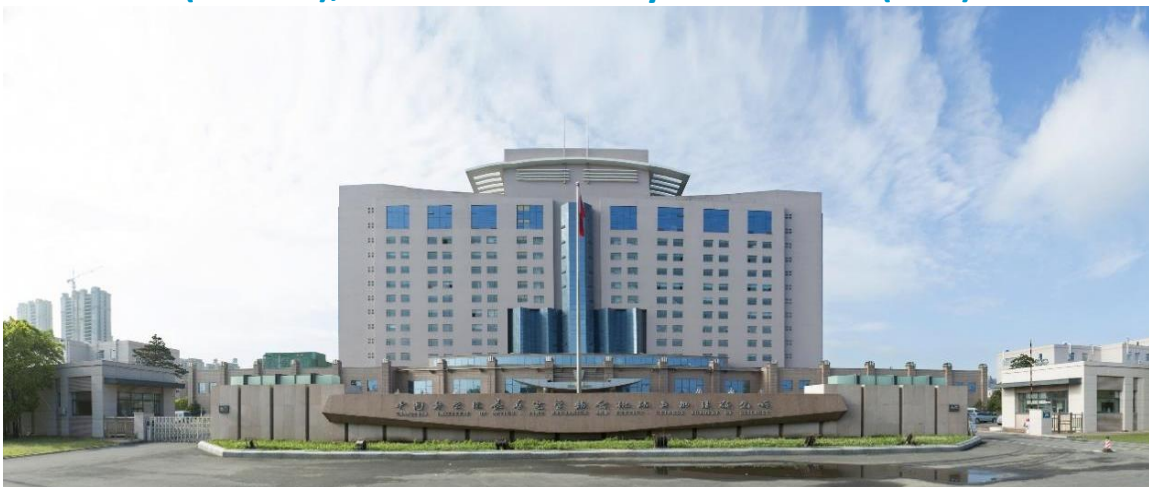
The meeting will be held at Changchun at **Holiday Inn Changchun Jingyue Hotel** at No. 3070 Jingyue Road, Nan Guan District, Changchun, JL, Mainland China

## City of Changchun



Changchun is located in the northeast of China, the geographical center of the northeast. It has a poetic name: “Spring City of Northern Kingdom”, because its urban greening rate is in the forefront of Asia's major cities. Changchun is the central city of Northeast Asia economic circle. It is a famous old industrial base, the earliest automobile industrial base and film production base in China.

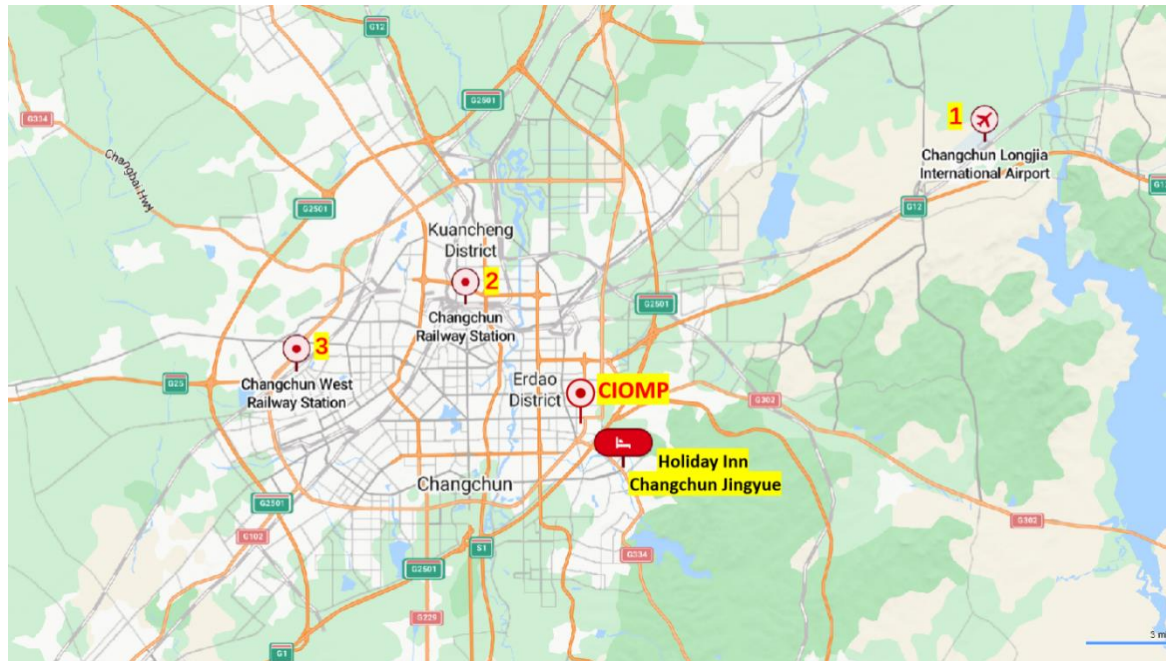
### Changchun Institute of Optics, Fine Mechanics and Physics (CIOMP), Chinese Academy of Sciences (CAS)



Founded in 1952, the [Changchun Institute of Optics, Fine Mechanics and Physics \(CIOMP\)](#) Chinese Academy of Sciences (CAS) focuses on the study of luminescence, applied optics, optical engineering, and precision mechanics and instrumentation. There are currently 2,578 faculty and staff members, including 4 academicians of the Chinese Academy of Sciences (CAS) and Chinese Academy of Engineering (CAE), 343 research professors and 739 associate research professors. CIOMP has formulated an integrated ‘Research, Industry, and Education’ strategy, and is constantly working on realizing its full potential. It hosts an International Optoelectronic Innovation Cluster, 6 State Key Laboratories and research centers, 5 CAS Key Laboratories, and 2 International Joint Laboratories. In the Changchun Optoelectronics Industrial Park, there are more than 30 high-tech companies set up with investment support from CIOMP whose total assets now have reached 403 million USD. Serving almost 100 companies, the national optoelectronic industry incubator provides an important public service platform for technology transfer in Jilin Province.

## HOW TO GET TO THE VENUE FROM AIRPORT AND RAILWAY STATION

**We will provide Free airport and train station pickup services; please include your arrival date and flight or train details in the **Attendance Form**.**



1. Changchun Longjia International Airport
2. Changchun Railway Station
3. Changchun West Railway Station

If you want to get to the venue by yourself, here are some suggestions:

### **Taxi or Didi Ride-Hailing:**

- A. From Changchun Longjia International Airport to the venue: approximately 36 km, around 30 minutes by car.
- B. From Changchun Railway Station to the venue: approximately 19.7 km, around 30 minutes by car (subject to delays during rush hours).
- C. From Changchun West Railway Station to the venue: approximately 25.3 km, around 40 minutes by car (subject to delays during rush hours).

### **Public Transportation Options:**

#### **A. From Changchun Longjia International Airport to the venue:**

Take the airport shuttle bus, transfer to Metro Line 2, then Metro Line 4, and finally Metro Line 3 to reach the venue. The total travel time is approximately 2.5 hours.

#### **B. From Changchun Railway Station to the venue:**

Take Metro Line 1, transfer to Metro Line 3 at Weixing Guangchang Station, and get off at Jinhejie Station. Walk 700 meters to the venue. The total travel time is approximately 1 hour.

#### **C. From Changchun West Railway Station to the venue:**

Take Metro Line 2, transfer to Metro Line 3 at Jiefangqiao Station, and get off at Jinhejie Station. Walk 700 meters to the venue. The total travel time is approximately 1 hour.

## Venue and Hotel Information

Since GSICS will be held at the Holiday Inn Changchun Jingyue Hotel, you can stay directly at Holiday Inn Changchun Jingyue Hotel. You may book your room directly through the IHG official website using the following link:

<https://www.ihg.com/holidayinn/hotels/us/en/changchun/cgqci/hoteldetail>

Alternatively, we can assist you in reserving a room, and you can pay at the front desk with a credit card upon arrival. If you need our assistance, please provide your check-in and check-out dates and send them to email [wuduo@ciomp.ac.cn](mailto:wuduo@ciomp.ac.cn).

The approximate rates are:

500 CNY per night for a Standard King Bed Room 45m<sup>2</sup>, including breakfast.

700 CNY per night for a King Bed Premium Room 70m<sup>2</sup>, including breakfast.



**Hotel**



**Hotel Lobby**



**Fitness Center**

Floor: -1F

Opening time: 24h



**Hi Bowl All Day Dining**

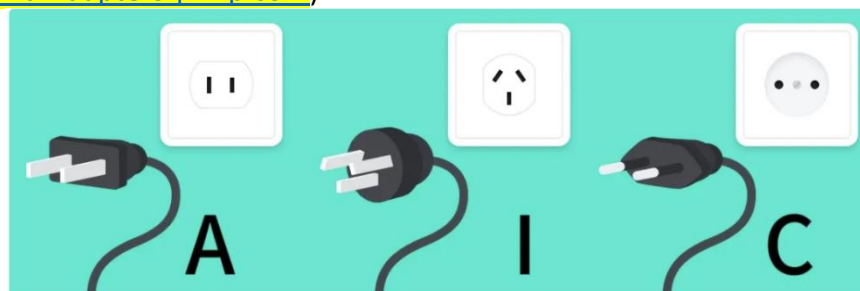
Floor: -1F

Breakfast: 6:30 - 10:00 (weekend 10:30)

Lunch: 11:30 - 14:30

Dinner: 17:30 - 21:30

- The venue will provide free internet access to facilitate online participation.
- Power strips for laptops will be available at the venue for your convenience during the conference. Please bring a **suitable adapter**. ([Understanding China Plugs: Types, Sockets, and Adapters | Trip.com](#))



China uses a 220V power supply and a frequency of 50Hz, with three main types of plugs: A, C, and I.



Standard Socket in China

The upper part of the socket usually accommodates two flat pins or two round pins, which are common for Type A and Type C plugs, respectively. These designs are suitable for a variety of devices from different regions, particularly those used in Europe and North America.

The lower part of the socket includes an earthed configuration with three flat pins in a triangular layout, designed for Type I plugs. This setup allows for safe and flexible

- Free working lunches during the conference are sponsored by CMA and CIOMP. If you have any special dietary requirements, please specify them in the Attendance Form.



**Ballroom 480m<sup>2</sup>**

(The ballroom can be divided into two 240 m<sup>2</sup> meeting rooms.)



**Function Hall 165 m<sup>2</sup>**



**Meeting Room 1 65 m<sup>2</sup>**

## China Travel Guide

Please refer to following website:

[China Travel Guide 2025 - Top Things to Do, Best Cities to Visit & Tips | Trip.com](#)

[Travel China Guide | Comprehensive Visa, Internet, Payment, Transportation & Hotel Booking](#)

## VISA

For visa-related issues regarding travel to China, please visit the website of the Chinese Embassy in your country

### Hotel Route Cards 长春净月假日酒店问路卡

Please show the following information to the driver:

**请带我去长春净月假日酒店，地址是净月高新技术产业开发区净月大街 3070 号。**

Please take me to the Holiday Inn Changchun Jingyue Hotel located at No. 3070 Jingyue Street, Jingyue High-tech Zone.

**酒店前台电话：86-0431-86586888**

The hotel front desk phone number is +86-0431-86586888



## CONTACT US

Dr. WU Duo

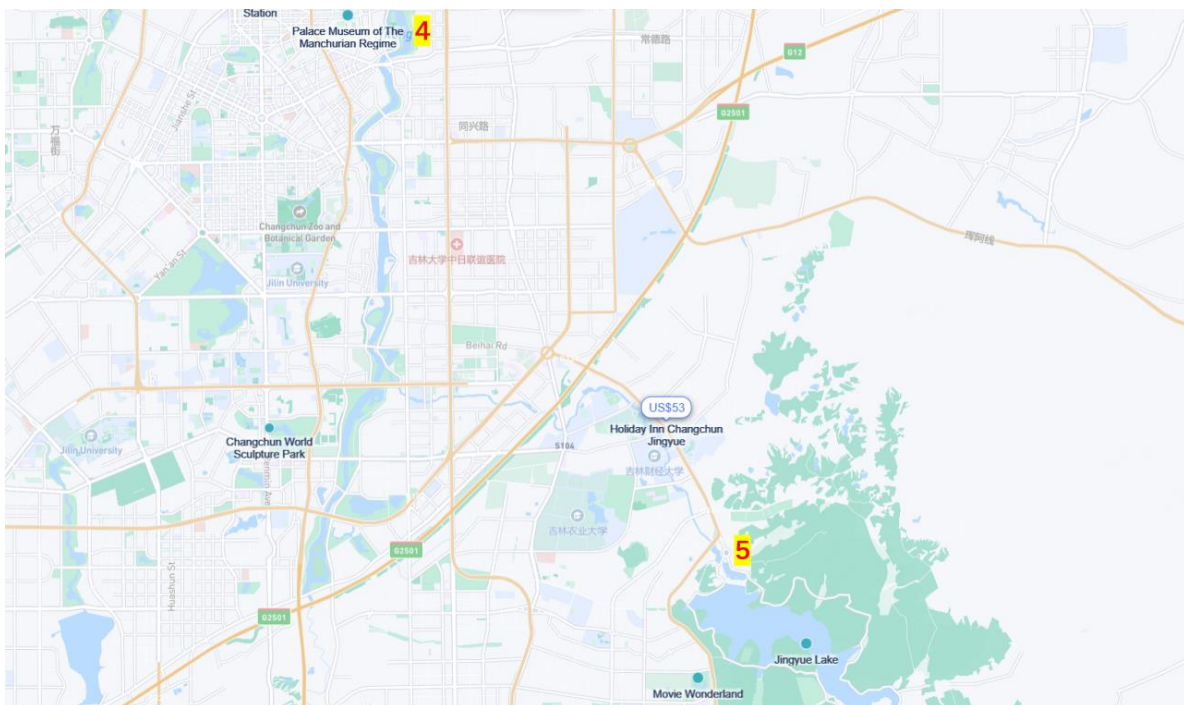
Space Optics Department I

Changchun Institute of Optics, Fine Mechanics and Physics, Chinese Academy of Sciences

Phone: +86-18943698969

Email: [wuduo@ciomp.ac.cn](mailto:wuduo@ciomp.ac.cn)

## Attractions in Changchun



4. Palace Museum of The Manchurian Regime
5. Jingyue Lake (Jingyuetan National Forest Park)

## Palace Museum of The Manchurian Regime



Palace Museum of the Manchurian Regime is located in Changchun City, North Guangfu Road, No. 5, is a palace-site-type museum, which is established on the site of the old palace of the Qing Dynasty, When Aisin Gioro Puyi as a puppet emperor of the puppet Manchukuo State, is now the national key cultural relics protection units, the first batch of national 5-A level tourist attractions and the national demonstration base of patriotism education.

The Palace Museum of the Manchurian Regime covers an area of about 250,500 square meters. After several years of comprehensive protection and restoration, at present, the puppet manchu palace has formed four functional areas. The central core area is characterized by "palace" tour. The main buildings include the Qinmin Building and the Tongde Hall where Puyi



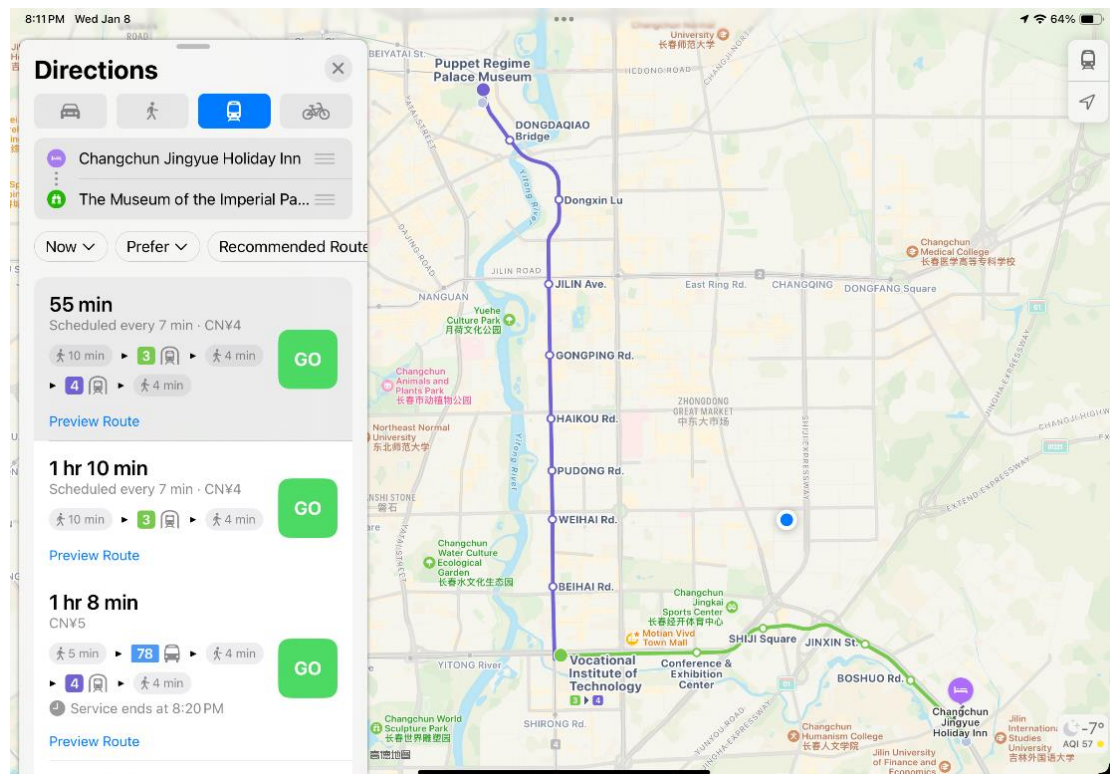
dealt with government affairs, held a grand ceremony, the Jixi Building where Puyi and his concubines live, and the Jiale Hall and the Qingyan Hall for holding banquets; as well as the subsidiary buildings such as the painting and calligraphy building, the east and west imperial gardens, and the air-raid shelter. The western area, which is the main part of the leisure and cultural display, has the imperial running track, stables, imperial flower cellar, and forbidden guards' barracks, and pays more attention to the audience's participation in the program. The eastern warning cultural education area centered on the history of Japanese Occupation of northeast China, further plays the role of patriotism education base, enhances the educational radiation function. The southern area based on the Guard barracks has been opened up as a tourism trade service area to meet the needs of tourists for shopping and consumption. The four functional areas make Palace Museum of the Manchurian Regime really become the main distinctive, unique, functional, elegant and comprehensive cultural and educational venues, and become a famous domestic and foreign humanities tourism brand.

**Address:** No.5 North Guangfu Road, Changchun, Jilin, China

**Telephone:** 0431-82866611

**Website:** [https://www.wmhg.com.cn/en/tour\\_service.html](https://www.wmhg.com.cn/en/tour_service.html)

**From Hotel:** Metro Line 3 then Metro Line 4



## Jingyue Lake (Jingyuetan National Forest Park)



Jingyuetan National Forest Park is located in the southeastern part of Changchun City District, Jilin Province, 18 kilometers away from the People's Square which is the center of Changchun City. It belongs to the remaining veins of Changbai Mountain, and it is the overland from the Changbai Mountain area in the east of Jilin Province to the Horqin Grassland in the west. There are 119 mountain ranges of various sizes, with altitudes ranging from 220 meters to 406.5 meters. The scenic area covers an area of 96.38 square kilometers, water area of 5.3 square kilometers, forest coverage rate up to 96%, and Taiwan's Sun Moon Lake as a sister pool. Unique location advantages make it "a piece of pure land in the hustle and bustle of the city", "Pearl of the Green Sea" and "City Oxygen Bar". It is the ecological core of Changchun and the name card of the city.

Jingyuetan National Scenic Spot was founded in 1934, named for the dammed water in the shape of a curved moon, and famous for its beautiful scenery. In 1988, Jingyuetan was approved by the State Council as a national key scenic spot; in 1989 approved by the Ministry of Forestry as a national forest park; in February of 2009 awarded the title of National Civilized Scenic Spot by the Central Civilization Office, the Ministry of Construction, and the National Tourism Administration; in July of the same year named as one of the eight scenic spots in Jilin, known as "Jingyue Shenxiu"; in 2011, officially awarded 5A-level tourist attraction by the National Tourism Administration; in August of 2012 by the State General Administration of Sports as a national fitness outdoor activities base; in November of 2014 named China's top ten

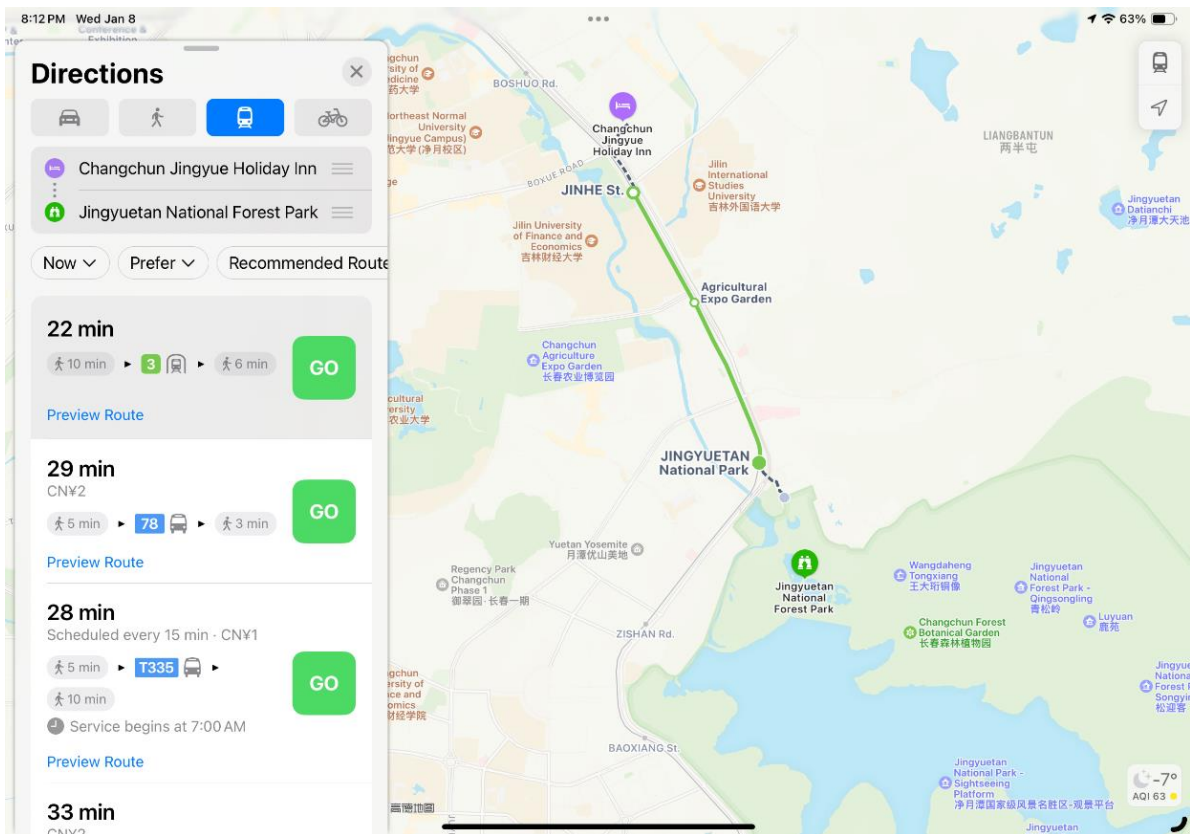
sports tourism Boutique Scenic Spot; in 2017 by the State General Administration of Sports as the National Sports Industry Demonstration Unit. Changchun Jingyuetan Vasaloppet International Ski Festival was awarded the first batch of national sports tourism boutique events, and China's top ten most influential ice and snow tourism festivals, and in 2019, the scenic spot was named as a boutique scenic spot for sports tourism by the Sports and Culture Development Center of the General Administration of Sports of the People's Republic of China.

**Address:** No. 5840 Jingyue Street, Changchun, China

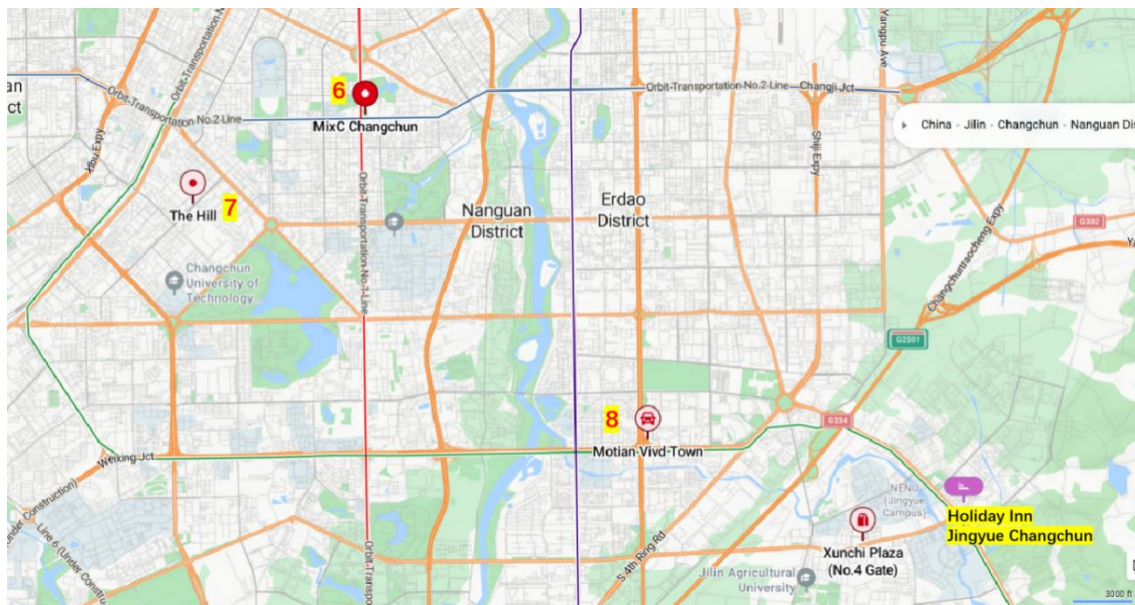
**Telephone:** 0431-84518000

**Website:** <http://www.jingyuetan.cn/en/>

**From Hotel:** Metro Line 3



## Shopping in Changchun



6. MixC Changchun
7. The Hill
8. Motian Vivid Town Mall

## MixC Changchun

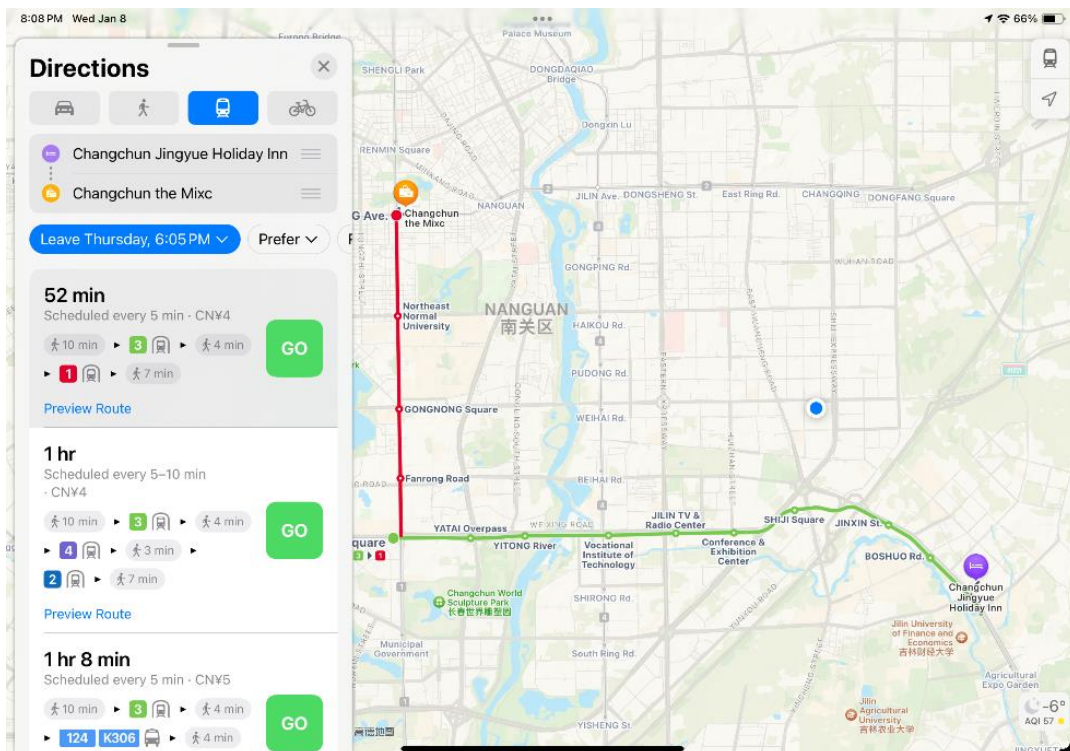


**Address:** 3388 Renmin Street, Nanguan District, Changchun City

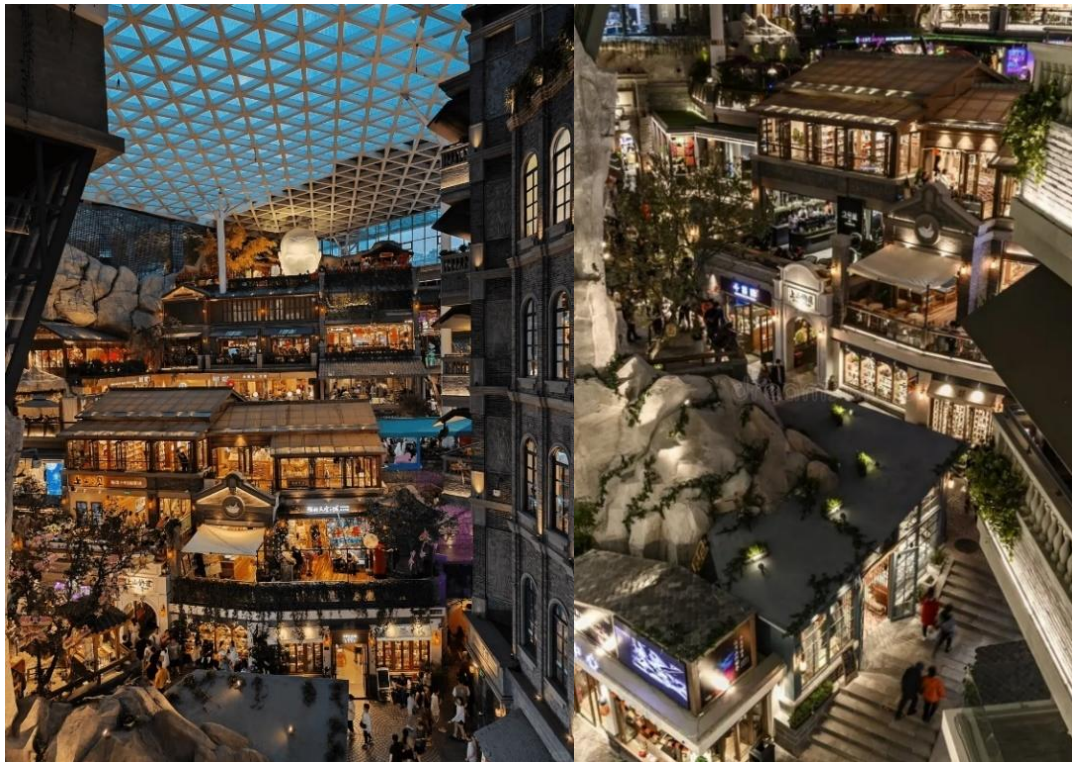
**Telephone:** 86-431-85028888

**Opening time:** 10:00-21:30

**From hotel:** Metro Line 3 to Metro Line 1



# The Hill (Most Popular)

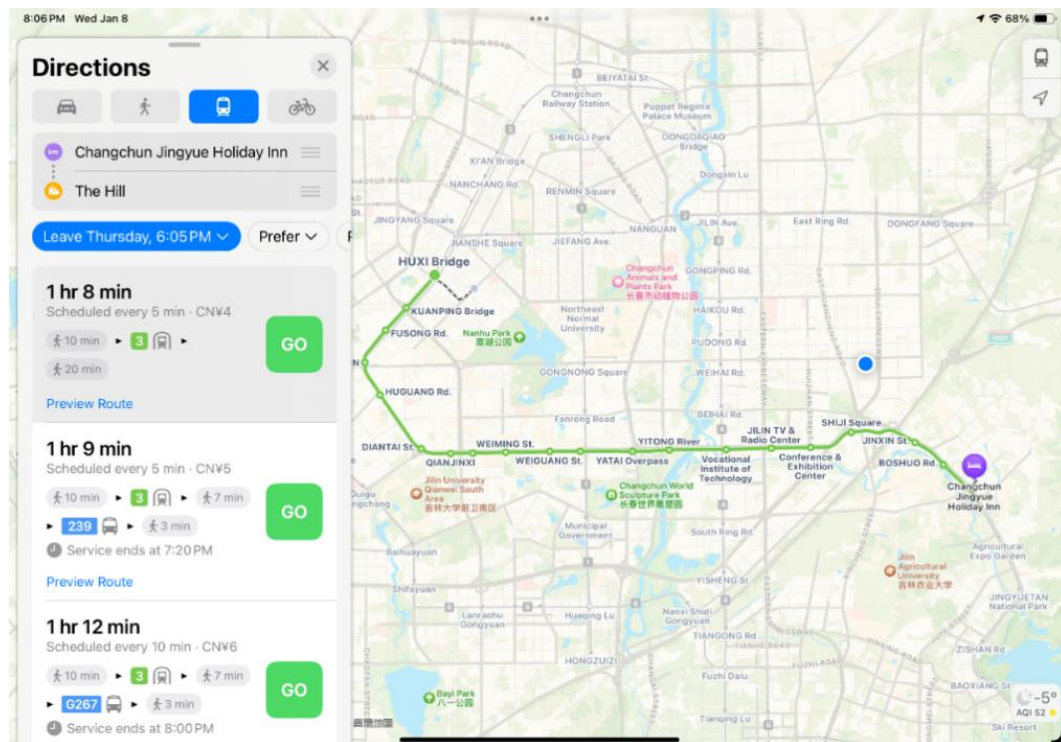


**Address:** No. 959 Hongqi Street, Chaoyang District, Changchun City

**Telephone:** 86-431-81137000

**Opening time:** 10:30-22:30

**From hotel:** Metro Line 3



## Motian Vivd Town Mall



**Address:** Northeast Corner of the Intersection of Weixing Road and Sendai Street, Nangan District, Changchun City,

**Telephone:** 86-431- 80518999

**Opening time:** 10:00-21:30

**From hotel:** Metro Line 3

